



How to...

make a flower press

Level of difficulty: hard but....very satisfying



This DIY requires the help and supervision of a parent or guardian!

What will you need:

- 2 pieces of 12mm plywood in 20 x 20 cm squares
- sandpaper
- a drill
- wood drill head bits
- countersink drill head bit (optional)
- 4 x 80mm M4 countersunk flat head screws
- Superglue
- 4 x M4 wingnuts
- Cardboard
- Stanley knife
- Recycled paper





1



Start by preparing your work area. Take out all the tools needed. Cover your surface with cardboard or a wax tablecloth. Set up a space for the drilling. Prepare a wood block you can lean against when cutting with the stanley knife.

Start with 2 blocks of 12mm thick plywood 20 x 20 cm. If you have a large sheet of plywood you will need to saw 2 squares 20 x 20 cm.

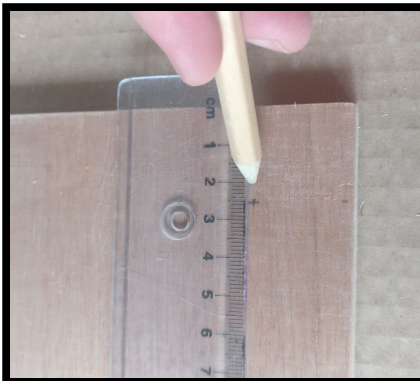
If instead of plywood you have other planks use these, they may however make a clunky flower press.

2



Sandpaper the edges of the plywood squares to remove any splinters.

3



In each of the four corners make a cross to mark the spot where you will drill holes. Measure out these points by measuring a 2.5 cm square from the sides up and make an x at the corner closest to the centre. You only need to mark one plywood square.



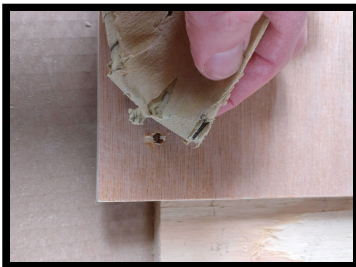
4



Clamp together your two sheets of plywood. Thanks to this you will drill holes in the same place in both your squares.

Drill holes in all four corners of the plywood squares using the number 5 wood drill bit.

5



Sandpaper down the holes to remove any splinters.

6



If you have a countersink drill bit use it to countersink the screw holes of the base plywood square. The countersink will now distinguish the top from the base. This countersink makes the screws fit neatly into the wood so they don't stick out.

Put your four screws into the base square.

7



Lift the screw 1cm out of the whole and carefully place a few drops of superglue into the screw hole. Push the screw through into the glue. This should be done when most of the screw is already pushed through to avoid covering the screw with superglue as then it will be hard to screw the wingnuts on.

After this you should have all your screws glued onto the bottom square as in the image in number 6.



8



Take the top square of plywood with the holes drilled in and measure out an octagon to fit between the square edges and the screws.

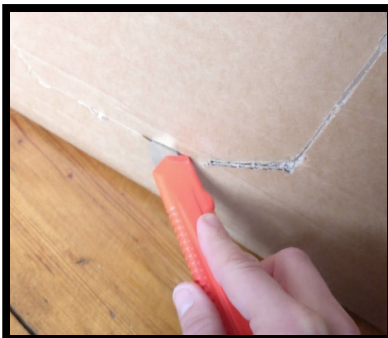
Cut this octagon out on a piece of paper or cardboard. Paper is easier and will come in handy for the inner sheets of your press.

9



Use your first octagon to measure out 6 cardboard octagons. Make sure you have a thick and large piece of wood underneath the cardboard and then cut out the octagons with your stanley knife.

10



If the cardboard is hard to lift your cardboard and cut the octagon from the back.

11



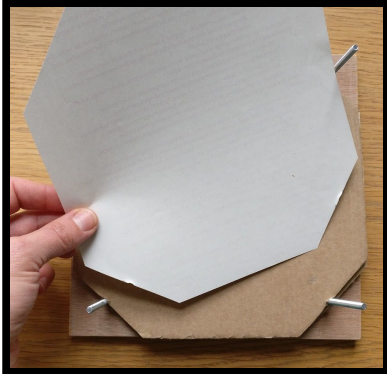
Next cut out 10 paper octagons using your first octagonal pattern as an example.

When finished you should have:

- 2 pieces of plywood; top and base.
- The base will have 4 screws glued in
- 6 octagonal pieces of cardboard
- 10 octagonal pieces of paper

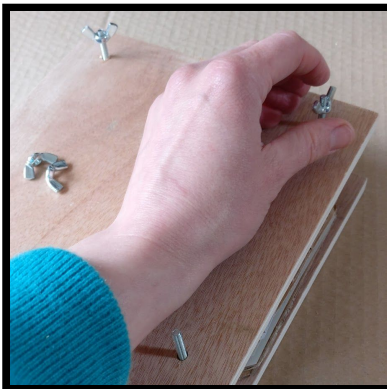


12



Assemble your flower press. Place one layer of cardboard octagon onto the base. Then place two paper octagons onto the cardboard, next one layer of cardboard octagon. You should end up with 6 cardboard octagons and 2 papers between each.

13



Finally place the top plywood square onto the assembled flower press and push the screws through the holes drilled in the square.

Screw on your wingnuts. These will help to compress and flatten the flowers once you have some in every layer.

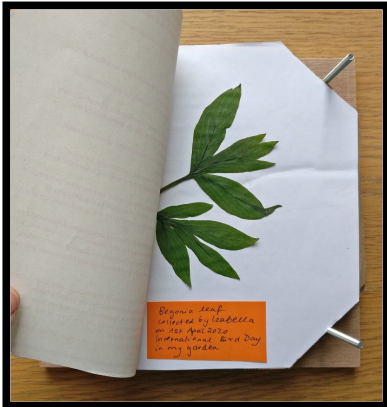
14



Congratulations! The flower press is ready and can be used.



15

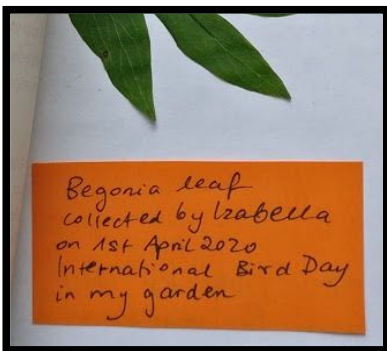


When pressing plants place them between two sheets of paper. This will absorb the moisture and make it easier for the plants to dry.

The cardboard layers aerate the compressed layers and prevent the rotting of the plants.

The wingnuts help press and flatten the plants once you have some in every layer.

16



When pressing a plant write a note with the information:

- 1) name and part of plant
- 2) when collected
- 3) where collected
- 4) who by

You can use this information later when making a herbarium or simply so you know what plant this is when you want to use it to make a card or art.