

# Welcome to Chelsea Physic Garden

A visual narrative guide to our garden



Here is the  
education and  
learning entrance.

Look out for this  
board!







There is an access ramp to the indoor learning classroom and the pathway is smooth as you enter the garden.





In most of the garden,  
the pathways are made  
of gravel and stones.

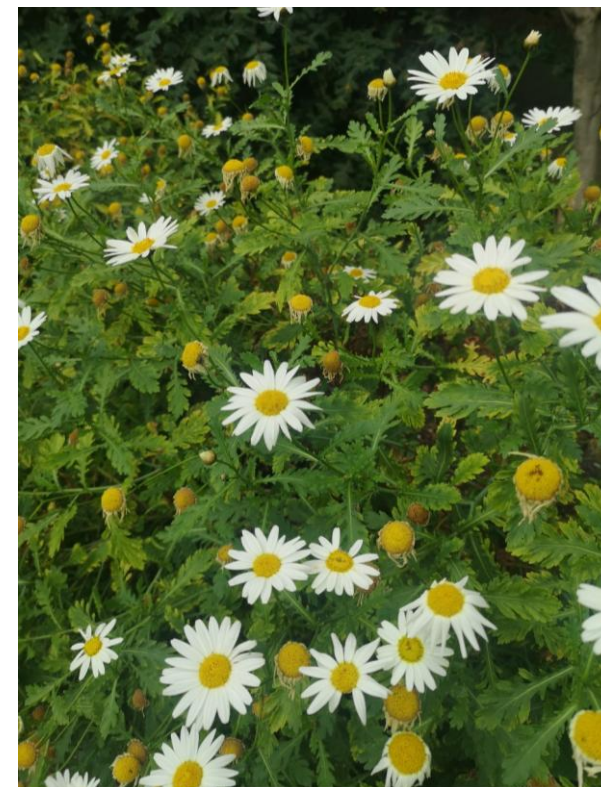
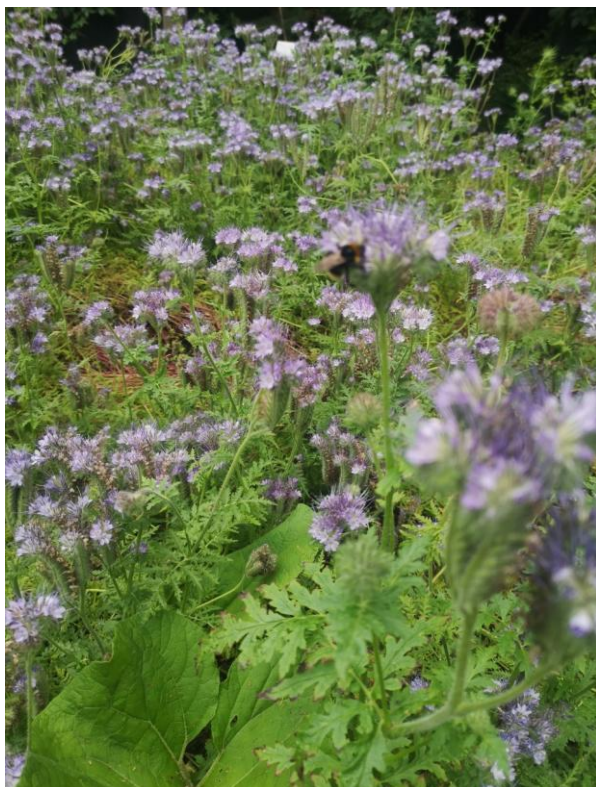
It is important not to kick  
or throw the stones.



The Garden is an open space so it can be a little noisy. You might hear birds chirping, cars, people talking, helicopters etc.





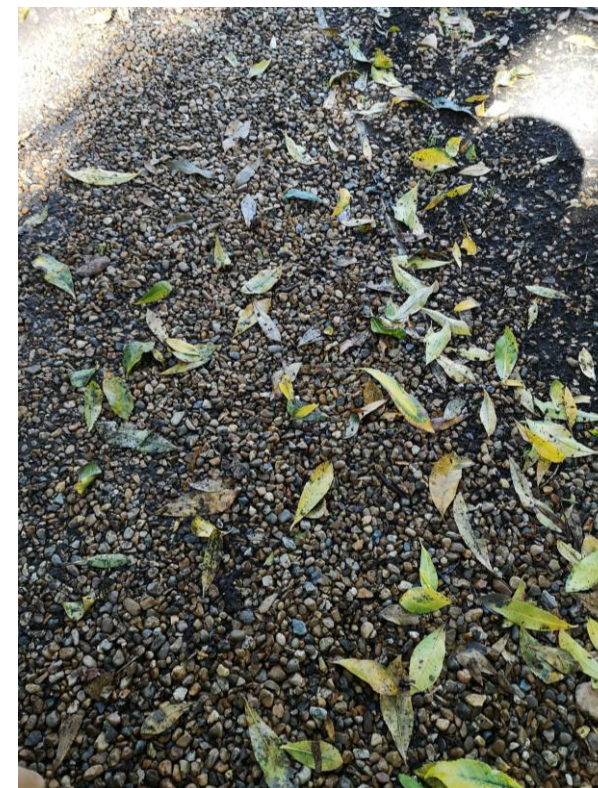
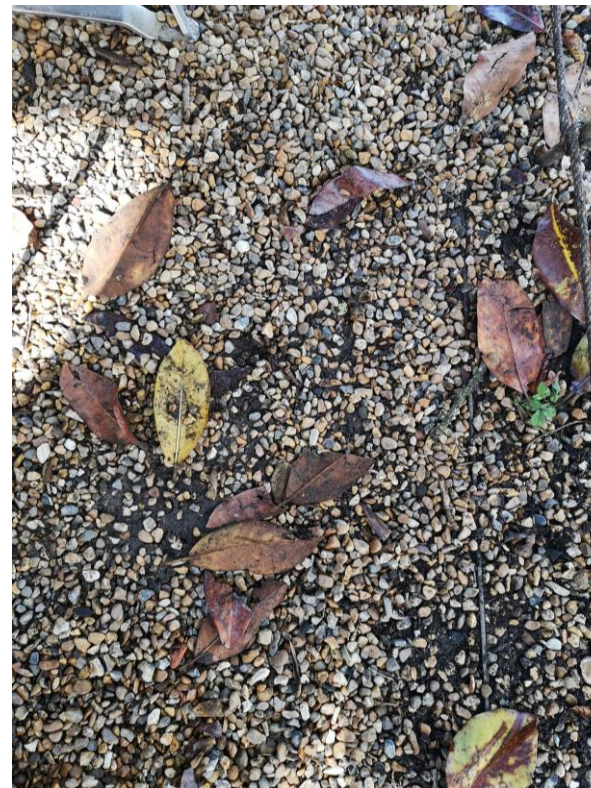


You can look at things.





# Some things you can pick up from the ground.







Dicotyledon Beds



World Woodlands



South American  
collection

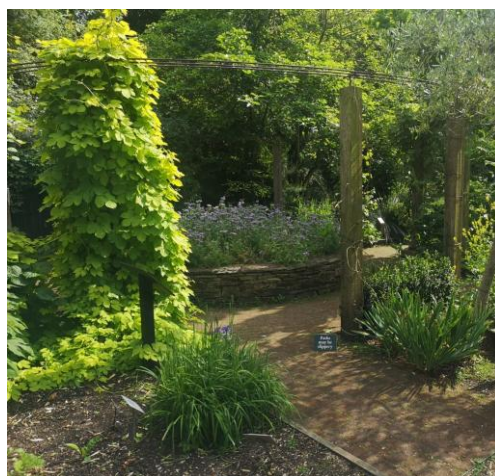


The garden has lots of different categories of plants for you to explore. In some areas there may be low light (The Woodlands, South American collection, History bed).

Edible  
plants



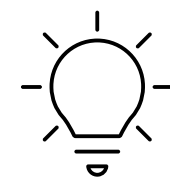
Atlantic Islands collection



Useful plants



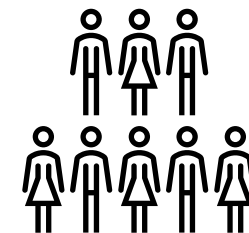
Medicinal plants







In the middle of the garden, we have a big statue of Sir Hans Sloane. This place can sometimes be a little busy.





Next to our  
statue we  
have one of  
the oldest  
Pond  
Rockeries in  
Europe.







This is our compost yard and outdoor classroom.





Here is our  
Tank Pond.  
Be careful it is  
very deep!





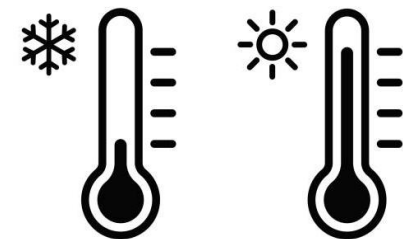
Here is the café  
where they  
serve food and  
drinks. You may  
smell strong  
aromas of food  
around this  
area.





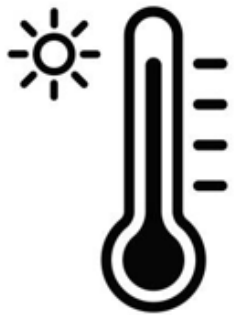


Our seven glasshouses are used to keep plants at different temperatures. You might feel hot or cold inside them.





This glasshouse  
is called the  
Tropical Corridor.  
It is hot and  
humid inside.





This is the Lower Lawn. Here you can eat your lunch if it's a lovely day.





We hope to see you soon at the  
garden!

